



### Aluminium 58BD HI Entrance Door



Available in a wide range of styles and formats, our stylish aluminium entrance door system is suitable for both light and medium-duty use.

Designed with security and flexibility front of mind, every door in the range is available in single and double configurations making them ideal for almost any application.

#### DESIGN FEATURES

- › Certified under the Secured By Design scheme
- › Tested to PAS 24
- › Multi-point locking mechanism
- › Cloaking feature on slave door conceals lock and prevents any access to locking points
- › Eurogroove hardware fitting
- › Security feature includes anti-lift feature built into the hinge

#### OPTIONS

- › Glazing 24mm – 40mm
- › 58mm or 70mm frame depth to accommodate varying types of applications
- › Low threshold option
- › Available in a range of single or dual colour and anodised finishes
- › Available for new build or refurbishment projects
- › Available in single or double door configuration

# SPECIFICATION DATABASE

ADDS - 7/24 - V1.0

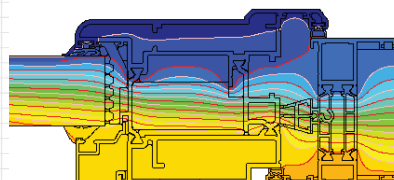
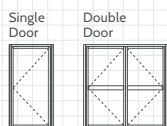


## Aluminium 58BD HI Entrance Door

### SPECIFICATIONS

	Single Open-In	Single Open-Out	Double Open-In	Double Open-Out
<b>Performance*and accreditations</b>				
U-Value (Double Glazing) (U <sub>g</sub> : 1.0 W/m <sup>2</sup> K)	1.3 W/m <sup>2</sup> K	1.3 W/m <sup>2</sup> K	1.3 W/m <sup>2</sup> K	1.3 W/m <sup>2</sup> K
U-Value (Triple Glazing) (U <sub>g</sub> : 0.7 W/m <sup>2</sup> K)	1.1 W/m <sup>2</sup> K	1.1 W/m <sup>2</sup> K	1.1 W/m <sup>2</sup> K	1.1 W/m <sup>2</sup> K
Air Permeability	Class 4 (600 Pa)	Class 4 (600 Pa)	Class 3 (600 Pa)	Class 3 (600 Pa)
Water Tightness	Class 3a (100 Pa)	Class 7a (300 Pa)	Class 7a (300 Pa)	Class 9a (600 Pa)
Wind Resistance	Class A3 (1200 Pa)	Class AE2400 (2400 Pa)	Class A3 (1200 Pa)	Class A4 (1600 Pa)
Building Regulations Part L Compliant	✓	✓	✓	✓
Building Regulations Part M Compliant	✓	✓	✓	✓
Security	PAS 24 & SBD	PAS 24 & SBD	PAS 24 & SBD	PAS 24 & SBD
Durability EN1191 Category	50,000 Cycles	50,000 Cycles	50,000 Cycles	50,000 Cycles
3rd Party Certification Q-Mark	✓	✓	✓	✓
<b>System</b>				
Depth	58mm - 70mm	58mm - 70mm	58mm - 70mm	58mm - 70mm
<b>Size and weight limits</b>				
Maximum Door Size (mm)	1200w x 2400h	1200w x 2400h	2400w x 2400h	2400w x 2400h
Maximum Door Weight	3 Hinges 67.5kg 4 Hinges 90kg	3 Hinges 67.5kg 4 Hinges 90kg	3 Hinges 67.5kg 4 Hinges 90kg	3 Hinges 67.5kg 4 Hinges 90kg
<b>Glazing</b>				
Glazing Thickness	24mm-40mm	24mm-40mm	24mm-40mm	24mm-40mm
<b>System Features</b>				
Single Colour	✓	✓	✓	✓
Dual Colour	✓	✓	✓	✓
Textured Finish	✓	✓	✓	✓
Anodised Finish	✓	✓	✓	✓
Thermally Broken	✓	✓	✓	✓
Sightline (Head)	129.5mm	129.5mm	129.5mm	129.5mm
Low Threshold Sightline (Cill)	111mm	111mm	111mm	111mm
Sightline (Jamb)	129.5mm	129.5mm	129.5mm	129.5mm
Sightline (Meeting Stile)	n/a	n/a	209.5mm	209.5mm
Panel Door	✓	✓	✓	✓
Multi-Point Locking	✓	✓	✓	✓
Barrel Hinges	✓	✓	✓	✓
Low Threshold	✓	✓	✓	✓

### CONFIGURATIONS



➤ 58BD HI THERMAL PROFILE

### CAD CROSS SECTIONS AND THERMAL PROFILE

Additional details are available on request.

